



ENVIRONMENT INCIDENT MANAGEMENT

COMMUNITY ENGAGEMENT PROCEDURE DPU

PURPOSE

This procedure describes Bega Cheese's process to engage the community during an environment incident. NSW EPA regulations require that the document is publicly available on the Bega Cheese website.

CONSIDERATIONS:

Potentially affected areas and the site in relation to the greater Bega area is shown in Figure 2.

Community members possibly affected by an environment incident at the Dairy Processing Unit at Lagoon Street include; residents in the small North Bega residential area located 300m from the rear of the site, visitors to The Heritage Centre located at the East of the site, and businesses in the North Bega Industrial Area.

Impact on the community depends on the type of incident, intensity, location on site and meteorological conditions. Bega Cheese will engage with neighbours in a timely manner based on potential harm.

The method of notifying the community can vary and depends on the nature of the incident and impact.

Community safety is the driving factor in determining actions under this procedure.

PROCEDURE

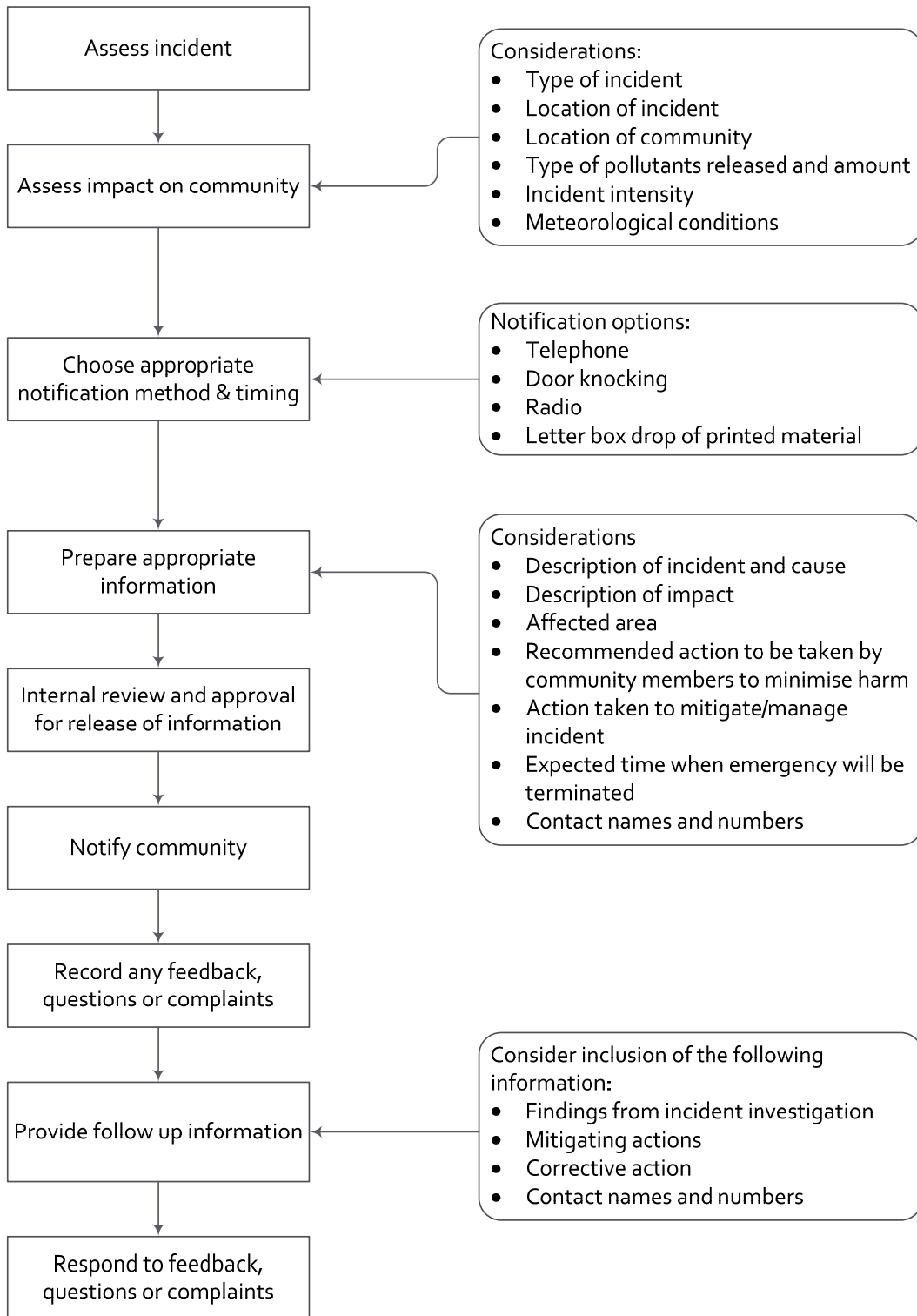
The process flow diagram in Figure 1 shows the method of impact assessment and community engagement.

REVIEW & APPROVAL

The Chief Executive Officer or Executive Chairman must authorise notification of the community and the content of the notification.

Figure 1

Assessment & Community Engagement Process



Bega Cheese Limited

Figure 2 Potential Impact Areas and Greater Bega Area

